

**Unique Designs
Our Specialty**

POLETECH

FLAGPOLE MANUFACTURER

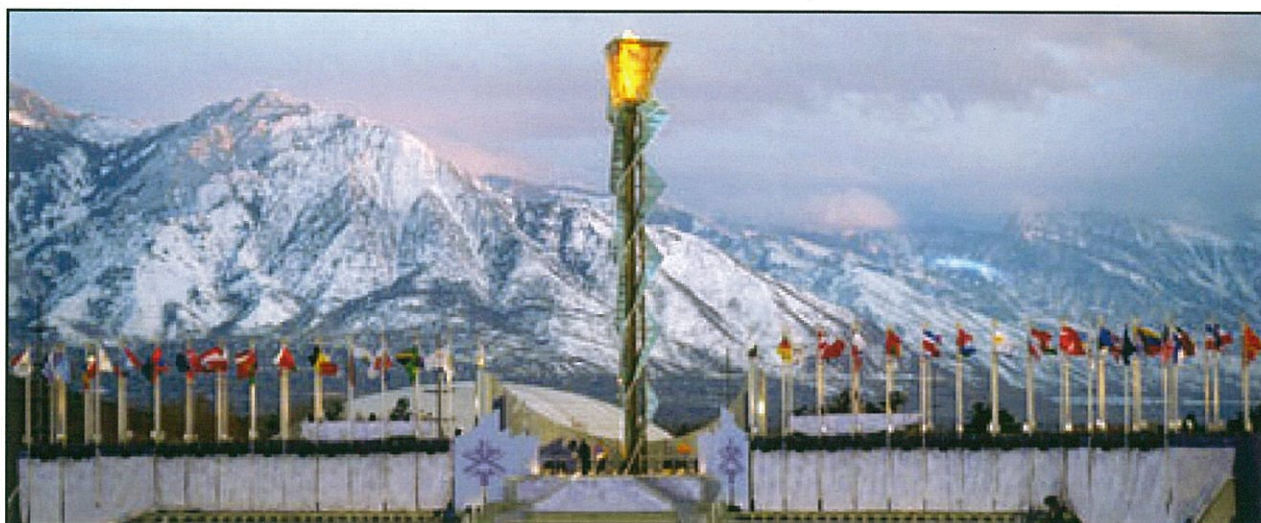
**In-House
Engineering**



**1996 Summer Olympics
Atlanta, GA**



**September 11, 2001 Memorial
Pelco – Clovis, CA**



**2002 Winter Olympics
Salt Lake City, UT**

POLE-TECH CO., INC.

POLE-TECH, has personnel with two generations of flagpole experience. This experience is well balanced in manufacturing, engineering, research & development, distribution and marketing.

Our diverse background experience and willingness to accept unique design challenges has led to our direct involvement and completion of many prestigious flagpole projects, including:

- 1996 OLYMPIC GAMES, Atlanta, GA
- 2002 OLYMPIC GAMES - Salt Lake City, UT
- 7 World Trade Center - New York, NY
- New York Yankees Stadium - Bronx, NY
- Lincoln Center - New York, NY
- Washington Monument - Washington D.C.
- WWII Memorial - Washington D.C.
- Ronald Reagan Building - Washington D.C.
- Boston Arena - Boston, MA
- Baltimore Orioles Stadium - Baltimore, MD
- TFC Bank Stadium Twin City Campus - Minneapolis, MN
- USTA National Tennis Center - Flushing, NY

- The Kennedy Center for Performing Arts, Washington D.C.
- Empire State Building, New York, NY
- Statue of Liberty, Liberty Island, NY
- Pittsburgh Convention Center, Pittsburgh, PA
- Al Jaber Complex, Abu Dhabi
- Doha City Expansion Center, Doha
- Emiri Terminal - Doha International Airport, Doha
- Saudi Embassy, Kuwait
- Royal Terminal Airbase, Riyadh
- Taipei World Trade Center - Taipei, Taiwan
- Westminster Abby - London, England
- Bayan Palace, Bayan

Design & Engineering

Pole-Tech, Inc. has on staff a licensed professional engineer. We specialize in "the unusual design" and are always available to offer expert advice in the design, engineering, and management of your particular flagpole project. Pole-Tech offers a full line of flagpoles including aluminum, stainless steel, bronze, fiberglass, and steel.

Materials

Aluminum Flagpoles are made of new 6063-T6 alloy seamless tubing have a minimum yield strength of 30,000 psi complying with ASTM B-241 standards. The rate of taper is 1" every 5'6". High strength, low maintenance, low weight, and cost make aluminum poles the most popular in the industry. Aluminum is available in satin brush, painted, and anodized finishes.

Stainless Steel Flagpoles are made of Type 304 alloy and have a rate of taper of 1" every 7.14 feet. Stainless steel poles are maintenance free and are the highest strength poles available. Stainless steel is available in AISI #4 (satin brush) through AISI #8 (mirror) finishes.

Bronze Flagpoles are made of CDA alloy 230 red brass. They are used primarily in outstanding architectural projects of historical or national significance. Available finishes include satin brush, and statuary antique (oxidized).

Steel Flagpoles are made of carbon steel and have a rate of taper of 1" every 7.14 feet. The recent popularity of large flags has brought about a resurgence in the use of large steel poles. Steel offers a high strength pole with initial low cost. Galvanized and new paint finishes have reduced maintenance costs in recent years.

Fiberglass Flagpoles are manufactured with a custom designed unidirectional fiberglass woven roving and polyester resin. The hard glossy gel coat surface finish resists soiling and scratching. Poles are available in any color.



Finishes

Satin Brush - A textured mechanical finish produced by abrasive polishing - yielding a smooth and uniform appearance. This finish is used on aluminum, stainless steel, and bronze.

Anodized - Is limited to aluminum. These finishes are obtained by a process of electrolysis. The common colors are clear, three shades of bronze, and black. These finishes are strongly recommending in coastal areas and are a perfect match for many building skins.

Organic Coating - Ranging from simple paint to the more complex air drying epoxies, urethanes, and thermally cured fluorocarbons. These finishes are most commonly used with aluminum and steel. Powder Coating has gained wide acceptance as a low cost, environmentally sound, high quality finish. It is a dry thermally cured painted coating, available in many colors that have excellent durability and abrasion resistance.

Statuary Antique - Is a chemically oxidized bronze finish. It becomes part of the material and has a high resistance to deterioration. Sealing the antique finish with clear lacquer increases durability.

Galvanized - A zinc hot dip coating used on steel. Galvanizing yields a durable silver like finish that effectively eliminates corrosion. Galvanizing significantly lowers the maintenance costs associated with steel poles.

- INDEX -

General: Material & Finishes	2	Tilting Flagpoles	6
Performance Characteristics	3	Outrigger Wall Mount Flagpoles	7
Ground Set Flagpole Systems	4	Vertical Wall Mount Flagpoles	7
Stainless Steel/Bronze Poles	5	Optional Accessories	8
Banner Poles	5	Standard Foundation Details	8
Nautical Flagpoles	6	Alternative Mounting Methods	8

CONE TAPERED ALUMINUM PERFORMANCE CHARACTERISTICS**

ARCHITECTURAL GROUNDSET FLAGPOLES

Catalog number	Height		Bottom Diam.	Top Diam.	Wall Thickness	Thickness of Taper Section	Shipping Selections	Pole Weight	Largest Flag Size Recommended						Max-mph. w/o flag
	overall	exposed							90 mph	100 mph	110 mph	120 mph	130 mph	140 mph	
PT205C	22'	20'	5"	3	0.188"	0.188"	1	74 lbs	5 X 8	5 X 8	5 X 8	5 X 8	5 X 8	5 X 8	286
PT255.5C	27'	25'	5.5"	3.5	0.188"	0.188"	1	88 lbs	6 X 10	6 X 10	6 X 10	6 X 10	6 X 10	5 X 8	231
PT256C	27'	25'	6"	3.5	0.188"	0.188"	1	92 lbs	6 X 10	6 X 10	6 X 10	6 X 10	6 X 10	6 X 10	251
PT306C	33'	30'	6"	3.5	0.188"	0.156"	2	133 lbs	6 X 10	6 X 10	6 X 10	6 X 10	4 X 6	3 X 5	196
PT357C	38.5'	35'	7"	3.5	0.188"	0.156"	2	182 lbs	8 X 12	8 X 12	8 X 12	6 X 10	5 X 8	4 X 6	186
PT408C	44'	40'	8"	3.5	0.188"	0.156"	2	238 lbs	10 X 15	10 X 15	10 X 15	8 X 12	5 X 8	4 X 6	178
PT4510C	49'	45'	10"	3.5	0.188"	0.156"	2	340 lbs	12 X 18	12 X 18	12 X 18	12 X 18	10 X 15	8 X 12	196
PT5010C	55'	50'	10"	3.5	0.188"	0.156"	3	380 lbs	12 X 18	12 X 18	12 X 18	8 X 12	5 X 8	3 X 5	166
PT6012D	66'	60'	12"	3.5	0.250"	0.188"	3	730 lbs	15 X 25	15 X 25	15 X 25	15 X 25	12 X 18	10 X 15	184
PT7012D	77'	70'	12"	3.5	0.250"	0.188"	4	855 lbs	20 X 30	15 X 25	10 X 15	6 X 10	3 X 5	0 X 0	142
PT7512E	82.5'	75'	12"	3.5	0.375"	0.219"	4	920 lbs	20 X 30	20 X 30	20 X 30	12 X 18	8 X 12	5 X 8	160
PT8012E	88'	80'	12"	4	0.375"	0.219"	4	1026 lbs	20 X 30	20 X 30	12 X 18	8 X 12	3 X 5	0 X 0	141
PT9012F	99'	90'	12"	4	0.500"	0.250"	4 or 5	1400 lbs	20 X 30	20 X 30	12 X 18	5 X 8	0 X 0	N.G	133
PT10016F	100'	100'	16"	4	0.500"	0.250"	4 or 5	2400 lbs	20 X 30	20 X 30	20 X 30	20 X 30	20 X 30	12 X 18	162

COMMERCIAL GROUNDSET FLAGPOLES

Catalog number	Height		Bottom Diameter	Top Diameter	Wall Thickness	Thickness of Taper Section	Shipping Selections	Pole Weight	Largest Flag Size Recommended						Max-mph. w/o flag
	overall	exposed							85 mph	90 mph	100 mph	110 mph	120 mph		
PT205A	22'	20'	5	3	0.125"	0.125	1	48 lbs	5 X 8	5 X 8	5 X 8	5 X 8	5 X 8		228
PT205B	22'	20'	5	3	0.156"	0.156	1	62 lbs	5 X 8	5 X 8	5 X 8	5 X 8	5 X 8		261
PT255A	27'	25'	5	3	0.125"	0.125	1	61 lbs	6 X 10	6 X 10	4 X 6	0 X 0	0 X 0		133
PT255B	27'	25'	5	3	0.156"	0.156	1	77 lbs	6 X 10	6 X 10	6 X 10	5 X 8	3 X 5		175
PT255C	27'	25'	5	3	0.188"	0.188	1	90 lbs	6 X 10	6 X 10	6 X 10	6 X 10	5 X 8		207
PT256B	27'	25'	6	3.5	0.156"	0.156	1	91 lbs	6 X 10	6 X 10	6 X 10	6 X 10	6 X 10		228
PT305B	33'	30'	5	3	0.156"	0.156	2	111 lbs	6 X 10	4 X 6	0 X 0	0 X 0	N.G		110
PT305C	33'	30'	5	3	0.188"	0.156	2	108 lbs	6 X 10	6 X 10	3 X 5	0 X 0	0 X 0		129
PT306B	33'	30'	6	3.5	0.156"	0.156	2	112 lbs	6 X 10	6 X 10	6 X 10	5 X 8	3 X 5		172
PT356B	38.5'	35'	6	3.5	0.156"	0.156	2	130 lbs	6 X 10	4 X 6	0 X 0	0 X 0	N.G		113
PT356C	38.5'	35'	6	3.5	0.188"	0.560	2	156 lbs	8 X 12	8 X 12	4 X 6	0 X 0	0 X 0		135
PT357B	38.5'	35'	7	3.5	0.156"	0.156	2	152 lbs	8 X 12	8 X 12	8 X 12	5 X 8	3 X 5		163
PT407B	44'	40'	7	3.5	0.156"	0.156	2	188 lbs	8 X 12	6 X 10	0 X 0	0 X 0	N.G		119
PT407C	44'	40'	7	3.5	0.188"	0.156	2	220 lbs	10 X 15	10 X 15	6 X 10	4 X 6	0 X 0		145
PT408B	44'	40'	8	3.5	0.156"	0.156	2	215 lbs	10 X 15	10 X 15	10 X 15	6 X 10	4 X 6		157
PT458C	49'	45'	8	3.5	0.188"	0.156	2	274 lbs	12 X 18	12 X 18	8 X 12	5 X 8	0 X 0		144
PT508C	55'	50'	8	3.5	0.188"	0.156	2	301 lbs	8 X 12	5 X 8	0 X 0	0 X 0	N.G		114
PT6010C	66'	60'	10	3.5	0.188"	0.156	3	472 lbs	12 X 18	10 X 15	4 X 6	0 X 0	N.G		117
PT6010D	66'	60'	10	3.5	0.250"	0.188	3	605 lbs	15 X 25	15 X 25	12 X 18	8 X 12	5 X 8		144
PT7010DE	77'	70'	10	3.5	0.312"	0.219	4	855 lbs	20 X 30	20 X 30	8 X 12	4 X 6	0 X 0		124

EXTRA HEAVY GROUNDSET FLAGPOLES

Catalog number	Height		Bottom Diameter	Top Diameter	Wall Thickness	Thickness of Taper Section	Shipping Selections	Pole Weight	Largest Flag Size Recommended						Max-mph. w/o flag
	overall	exposed							120 mph	130 mph	140 mph	150 mph	160 mph		
PT205D	22'	20'	5	3	0.250"	0.250	1	97 lbs	5 X 8	5 X 8	5 X 8	5 X 8	5 X 8		234
PT206C	22'	20'	6	3.5	0.188"	0.188	1	89 lbs	5 X 8	5 X 8	5 X 8	5 X 8	5 X 8		325
PT256D	27'	25'	6	3.5	0.250"	0.250	1	146 lbs	6 X 10	6 X 10	6 X 10	6 X 10	6 X 10		285
PT257C	27'	25'	7	3.5	0.188"	0.188	1	130 lbs	6 X 10	6 X 10	6 X 10	6 X 10	6 X 10		292
PT306D	33'	30'	6	3.5	0.250"	0.188	2	175 lbs	6 X 10	6 X 10	6 X 10	6 X 10	4 X 6		229
PT307C	33'	30'	7	3.5	0.188"	0.156	2	158 lbs	6 X 10	6 X 10	6 X 10	6 X 10	5 X 8		234
PT358C	38.5'	35'	8	3.5	0.188"	0.156	2	208 lbs	8 X 12	8 X 12	8 X 12	6 X 10	5 X 8		218
PT358D	38.5'	35'	8	3.5	0.250"	0.188	2	276 lbs	8 X 12	8 X 12	8 X 12	8 X 12	8 X 12		252
PT408D	44'	40'	8	3.5	0.250"	0.188	2	293 lbs	10 X 15	10 X 15	8 X 12	6 X 10	5 X 8		209
PT4010C	44'	40'	10	3.5	0.188"	0.156	2	283 lbs	10 X 15	10 X 15	10 X 15	10 X 15	8 X 12		233
PT4510D	49'	45'	10	3.5	0.250"	0.188	2	315 lbs	12 X 18	12 X 18	12 X 18	12 X 18	10 X 15		228
PT5010D	55'	50'	10	3.5	0.250"	0.188	3	437 lbs	12 X 18	12 X 18	10 X 15	6 X 10	5 X 8		196
PT6012E	66'	60'	12	4	0.375"	0.219	3	754 lbs	15 X 25	15 X 25	15 X 25	15 X 25	12 X 18		219
PT7012E	77'	70'	12	4	0.375"	0.219	4	930 lbs	20 X 30	15 X 25	10 X 15	6 X 10	3 X 5		175
PT8012F	88'	80'	12	4	0.500"	0.250	4	1090 lbs	20 X 30	12 X 18	8 X 12	4 X 6	0 X 0		164

Reference: "Guide Specifications for Design of Metal Flagpoles", American National Standard ANSI/NAAMM FP1001-97, Fourth Edition, NAAMM 1997.

Industry standard flag sizes are 3'x 5', 4'x 6', 5'x 8', 6'x 10', 8'x 12', 10'x 15', 12'x 18', 15'x 25', and 20'x 30'.

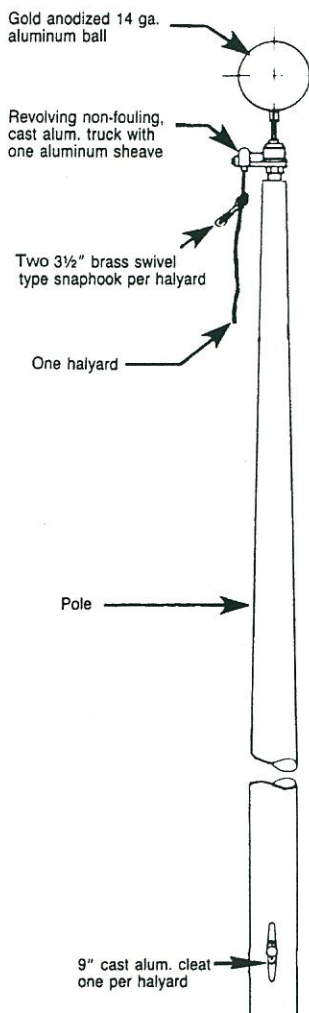
0 = Flagpole is capable of withstanding winds of this speed when no flag is flying only.

** = Consult factory for poles mounted above grade elevation, non standard designs, or any sizes not shown.-

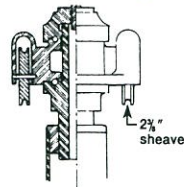
CONE TAPERED GROUND SET FLAGPOLE SYSTEMS

ALUMINUM MATERIAL: Poles are constructed of 6063-T6 aluminum. This alloy conforms to ASTM B-241 standards and has a minimum ultimate tensile strength of 30,000 psi and minimum ultimate yield strength of 25,000 psi.

Standard External Halvard



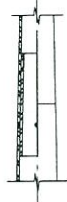
Double Revolving Truck



Double revolving
Two 2 1/4" sheaves

Revolving type cast aluminum body with stainless steel needle bearings mounted on an aluminum spindle with one cast aluminum sheave that rotates on 1/2" dia. dual pins.

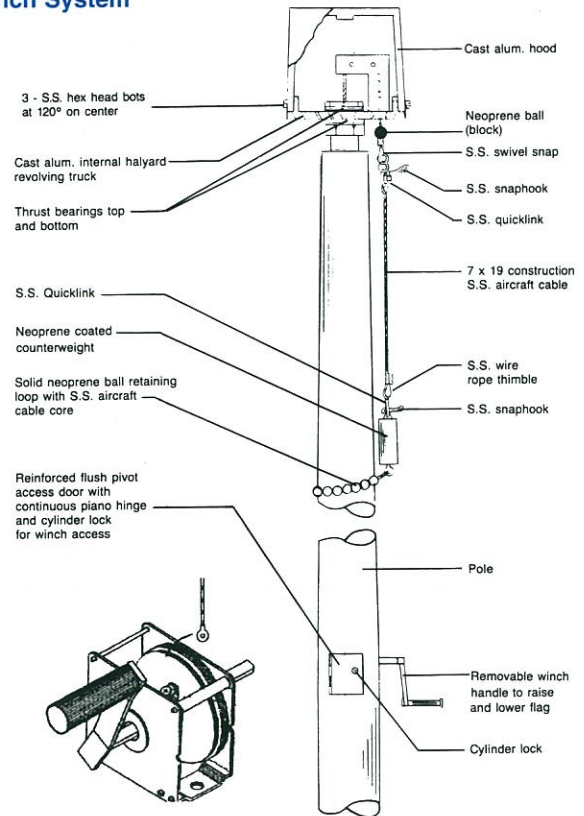
Self Aligning Field Joint



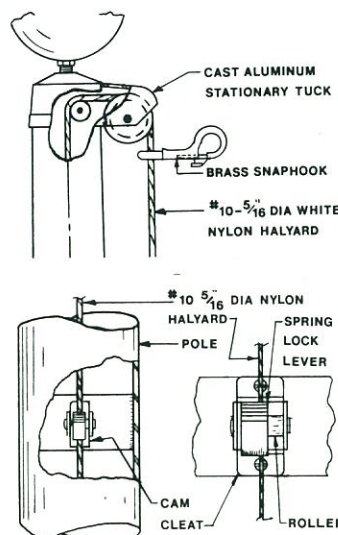
For shafts over 27' which must be shipped in sections, a shop tested, machined sleeve is provided for field joining (friction fit) of the sections with just a hairline joint visible.

Internal Halvard – Vandal Deterrent Systems

Winch System



Cam Cleat System



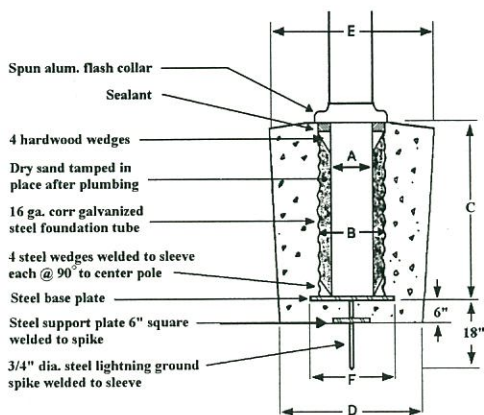
WINCH: This system consists of a stainless steel cable, which is routed through the interior of the flagpole shaft and is attached to gearless positive locking winch.

CAM: This system consists of a nylon rope, which is routed through the interior of the flagpole shaft and is attached to cam cleat mechanism. This assembly is supplied with a standard stationary truck. An optional revolving truck is available.

The winch and cam system have flush access doors at ground level. Both systems have beaded slings encircling the pole, which keeps the flag tight against the flagpole. The neoprene counter weight allows for proper lowering and raising of the flag. The winch and cam system allow for the display of the flag at any position on the pole.

The winch system is suitable for all poles larger than 5.5" in diameter. The cam system is available on all sizes 5" and above, but is not recommended for poles over 35' tall.

Corrugated Ground Sleeve Details



Foundation dimensions vary depending on pole size. Refer to chart on page 8 or visit www.poletech.com for more details.

CONE TAPERED STAINLESS STEEL/BRONZE FLAGPOLES*

POLE-TECH'S Coned Tapered Stainless Steel Flagpoles are made of type 304 alloy complying with ASTM A312. These flagpoles combine excellent strength and resistance to corrosion along with the outstanding maintenance free finishes (AISI #4 [satin brush] through AISI #8 [mirror]) available on any stainless steel product.

STAINLESS STEEL

MATERIAL:

Stainless Steel – 304 Alloy with a satin brush finish. (AISI #4)

TAPER:

1" every 7.14 feet.

STANDARD FITTINGS:

Ball - Stainless steel with an AISI #4 finish.

Truck - Cast metal, double pulley.

Halyard - Two sets of #10-5/16 dia. diamond braid nylon rope.

Cleats - Two 9" cast metal

Snaphooks - Four 3 1/2" stainless steel swivel type snaps.

Collar - Spun stainless steel.

Foundation Tube - #16 ga. galvanized corrugated steel.

CONE TAPERED STAINLESS STEEL*

Exposed Height	Overall Height	Diameter		Wall Thickness	Length		Ball Diameter	Sections	Flag Size
		Butt	Top		Taper	Straight			
20'	22'	5 1/8"	3 1/4"	.134	16 1/2'	5 1/2'	5"	1	4' x 6'
25'	28'	5 1/8"	3 1/4"	.134	16 1/2'	11'	5"	1	4' x 6'
30'	33'	5 1/8"	3 1/4"	.134	16 1/2'	16 1/2'	6"	1	5' x 8'
35'	38 1/2'	5 1/8"	3 1/4"	.258	16 1/2'	22'	6"	1	5' x 8'
40'	44'	6 1/8"	3 1/4"	.280	24'	20'	8"	2	6' x 10'
50'	55'	8 1/8"	4"	.322	38 1/2'	16 1/2'	8"	2	6' x 12'
60'	66'	8 1/8"	4"	.322	38 1/2'	27 1/2'	8"	2	10' x 15'
70'	77'	10 1/8"	4"	.365	48'	29'	10"	2	12' x 18'
80'	88'	12 1/4"	4"	.375	62 1/2'	25 1/2'	12"	3	15' x 25'
90'	99'	12 1/4"	4"	.375	62 1/2'	36 1/2'	14"	3	15' x 25'
100'	110'	12 1/4"	4"	.500	62 1/2'	47 1/2'	16"	3	15' x 25'

*NOTE: CONE TAPERED BRONZE FLAGPOLES are available in all stainless steel or aluminum sizes listed. Consult our factory for detailed specifications.

BANNER POLES

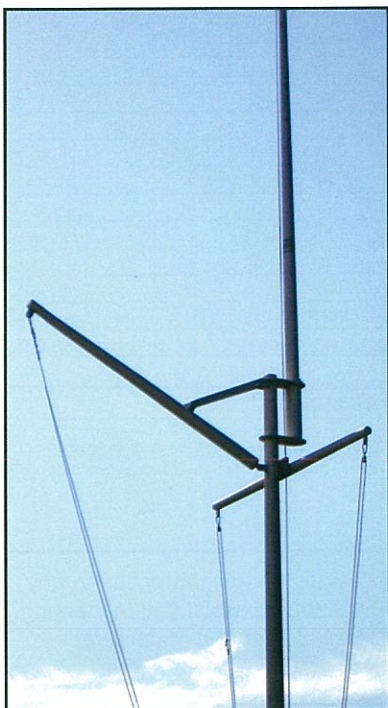
Custom designed architectural banner poles will allow you to properly display information or colorful designs bringing attention to any establishment. Our banner poles are designed to meet specific needs, and our in-house engineer is available to assist you in meeting your unique requirements. Utilizing banner poles, you can insure that your banners will be displayed in the safest and most attractive way leaving a lasting impression.

*Consult our factory for custom banners designed by Pole-Tech.



NAUTICAL FLAGPOLE SYSTEMS

NAUTICAL FLAGPOLES are ideally suited in a coastal setting. They may be single or double-masted and are usually set in an embedded concrete foundation sleeve. These flagpoles are supplied with standard equipment including an aluminum ball, cast truck and cleats, pulleys, nylon halyards, bronze chrome-plated snap hooks, flash collar, and a galvanized steel corrugated foundation tube.



DOUBLE MASTED FLAGPOLES:

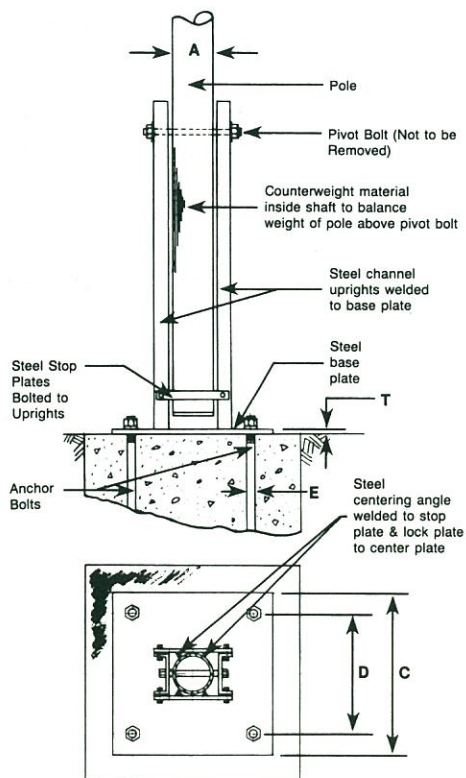
CODE NO. 1000-																
--	--	--	--	--	--	--	--	--	--	--	--	--	--	--	--	--

SINGLE MASTED FLAGPOLES with YARDARM ONLY
These poles are available in the same sizes as standard cone tapered poles. The yardarm size will correspond with the pole heights as shown in the chart above.



COUNTERBALANCED TILTING FLAGPOLES

COUNTERBALANCED POLE SYSTEM STYLE PT-P



Counterbalanced tilting aluminum flagpoles are cone tapered - supplied with standard fittings and have an anchor bolt mounting system. This design provides the owner with a counterbalanced pole that can be lowered by two people. This reduces maintenance costs of servicing ropes and accessories. These poles are generally groundset but are suitable for roof top installations in the small sizes. Poles are readily available in heights up to 60 feet. A yardarm option is available.

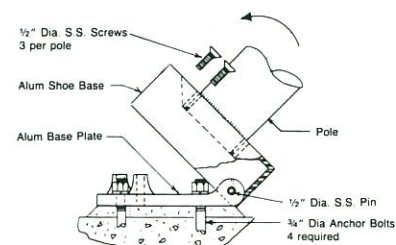
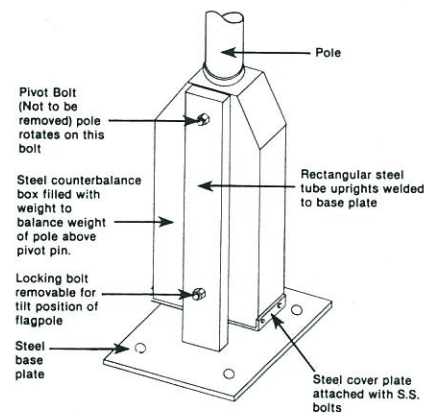
COUNTERBALANCED SYSTEM

Pole Exposed Height	Diameter		Base Plate Size C x "C" x T	O.C. Bolt Holes "D"	Anchor Bolt Size "E"	Shipping Weights	
	Butt "A"	Top				Pole	Tilting Unit
25	5	3 1/4	20" x 20" x 1/2"	16"	3/4 x 24"	80	450
30	6	3 1/2	20" x 20" x 1/2"	16"	1" x 36"	117	520
35	7	3 1/2	24" x 24" x 1/2"	20"	1" x 36"	153	610
40	8	3 1/2	24" x 24" x 1/2"	20"	1" x 36"	210	635
45	8	3 1/2	30" x 30" x 3/4"	24"	1" x 36"	235	720
50	10	4	30" x 30" x 3/4"	24"	1 1/4 x 48"	318	1200
60	10	4	36" x 36" x 1"	30"	1 1/4 x 48"	460	2000

HINGED TILTDOWN SHOEBASE

Pole-Tech's PT-H mounting method is the most economical tilt down flagpole available. The tilting capability allows for easy access to ropes and accessories for maintenance. This mounting method is only recommended for flagpoles up to 30'. Consult the factory for available sizes

COUNTERBALANCED BOX SYSTEM STYLE PT-B



**HINGED ALUMINUM
TILTDOWN SHOEBASE**

VERTICAL AND OUTRIGGER WALL MOUNT FLAGPOLES

In high density or high traffic areas conventional ground set flagpoles are often impractical.

Outrigger flagpoles set well above traffic corridors in metropolitan locations are ideally suited to aesthetically enhance a structure.

Vertical wall mounted poles are well suited for 1 to 3 story buildings such as shopping centers, firehouses, and post offices. Custom designed poles are available for large skyscrapers, uniquely defining certain large buildings in a metropolitan setting.

Standard fittings on these poles include a gold anodized ball, stationary cast aluminum truck, one #10 halyard, two chrome-plated snap hooks, one cast aluminum cleat, and a cast or fabricated aluminum wall bracket. All of these poles are available in aluminum, bronze, and stainless steel, and with the finishes as described on page 2. For bolt dimensions, bracket spacing and detailed charts please visit our web-site www.poletech.com.

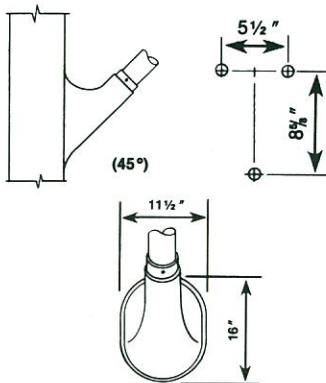
OUTRIGGER FLAGPOLES

Pole Length	Diameter		Wall	Ball	Flag Size
	Butt	Top			
8'	4"	27/8"	.125	4"	4' x 6'
10'	4"	27/8"	.125	4"	4' x 6'
12'	4"	27/8"	.125	4"	4' x 6'
14'	4"	27/8"	.156	4"	4' x 6'

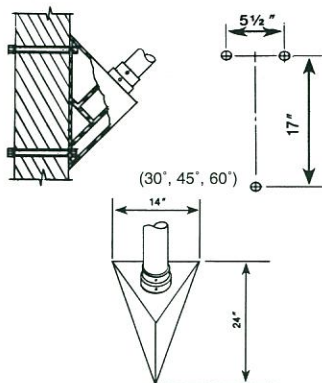
NOTE: On poles longer than 15' additional cable or bracing may be required (consult factory).



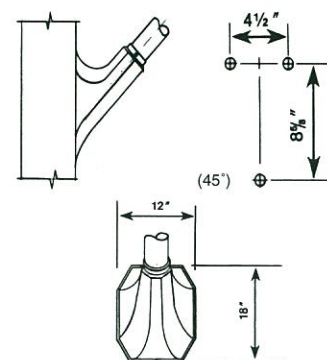
PO-10



PO-20



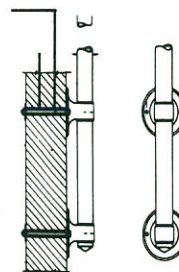
PO-30



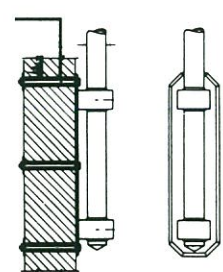
VERTICAL WALL POLES



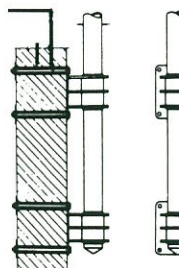
PTV-10



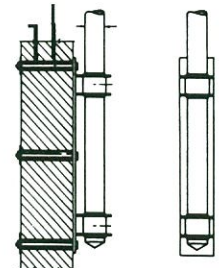
PTV-20



PTV-30



PTV-40

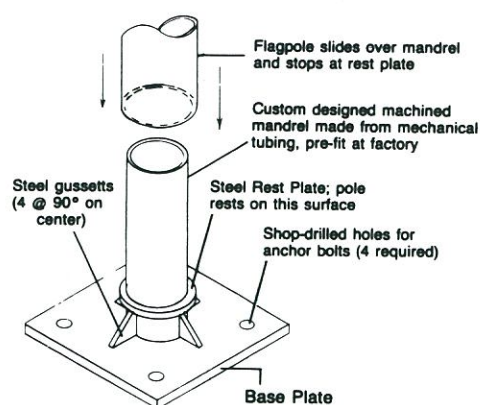


Pole Length	Taper	A-Diameter		B Space Bet. Brackets	Wall	Ball	Typical Flag Size
		Butt	Top				
15	8 3	3	1 7/8	1 6	.125	3	4 x 6
20	8 3	4	1 7/8	2 0	.125	4	5 x 8
25	11 0	5	3 1/4	2 6	.188	5	5 x 8
30	11 0	5	3 1/4	3 0	.188	5	5 x 8
35	15 0	6	3 1/2	3 6	.188	6	6 x 10

NOTE: Poles over 35' require additional bracing (consult factory).

For bolt dimensions, bracket spacing and detailed charts please visit our web-site www.poletech.com

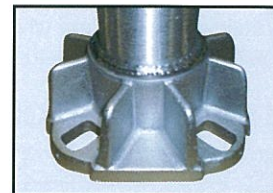
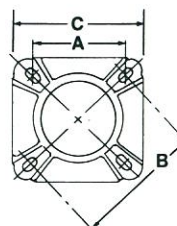
ALTERNATIVE MOUNTING METHODS



MANDREL - A mandrel mounting is used where an embedded foundation is impossible for structural reasons. Typical uses are on plazas over underground parking areas and building roofs.

The mounting consists of a mandrel machined to fit the internal diameter of the flagpole and welded to a heavy steel plate. This type of mounting is always custom engineering to accommodate any size pole.

SHOE-BASE - May be used for aluminum poles. A cast aluminum shoe base welded to the pole is secured to anchor bolts set in a concrete footing.

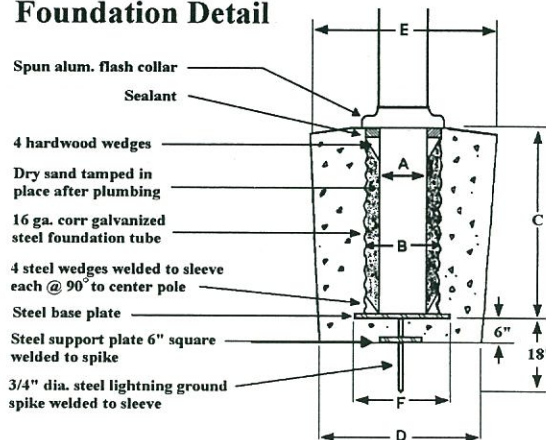


Pole Dia.	4"	5"	6"	7"	8"	10"
A	5 3/4	6	6 3/4	7 1/2	8 1/4	10 1/2
B	8	8 1/2	9 1/2	10 1/2	11 1/2	14 1/2
C	9 1/4	9 3/4	10 1/2	11 1/4	12	14

CORRUGATED STEEL SLEEVE:

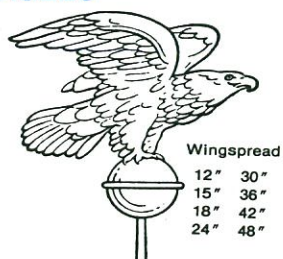
FLAGPOLE		A	B	C	D		E	F
Exposed Height	Overall Length	Pole Butt	Sleeve Dia.	Sleeve Length	Foundation Base	Foundation Top	Base Plate	
20	22	5	8	24	24	30	12	
25	28	5/6	8/10	36	24/30	34	12	
30	33	5/6	8/10	36	30	36	12	
35	38 1/2	6/7	10	42	30	36	14	
40	44	7/8	10/12	48	36	42	14/16	
45	49	8/10	12/15	48	36	42	16/18	
50	55	8/10	12/15	60	42	48	16/18	
60	66	10/12	15	72	42	48	18	
70	77	12	15	84	48	60	20	
80	88	12	15	96	54	72	20	
90	99	12	15	108	60	72	24	
100	110	16	21	120	66	72	24	

Foundation Detail

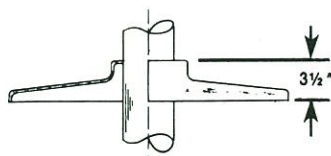


OPTIONS:

EAGLES



BASES - (cast)



PTB-100

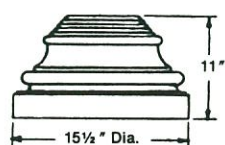
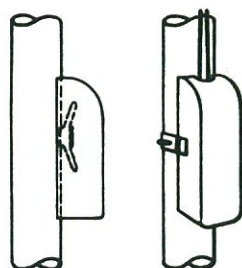


PTB-200

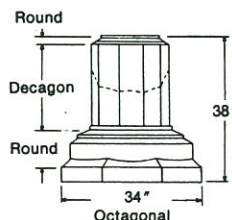


PTB-300

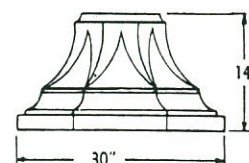
CLEAT COVER



PTB-600



PTB-900



PTB-1000

For more detailed information

Visit us on the web at: www.poletech.com

Pole-Tech Co., Inc.
97 Gnarled Hollow Road • East Setauket, NY 11733 • USA
Tel: 631.689.5525 • 800.633.6733 • Fax: 631.689.5528
E-mail: info@poletech.com